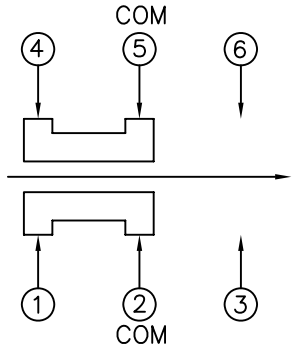


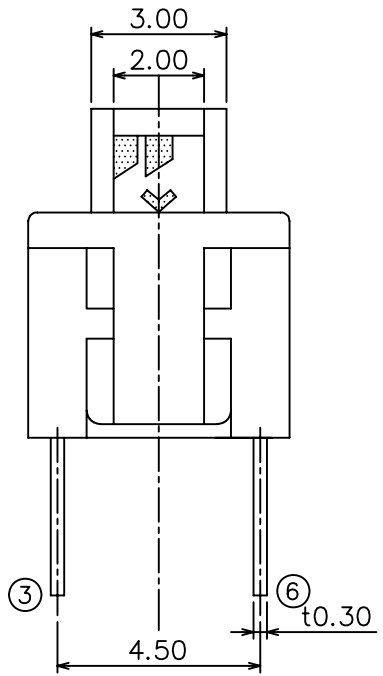
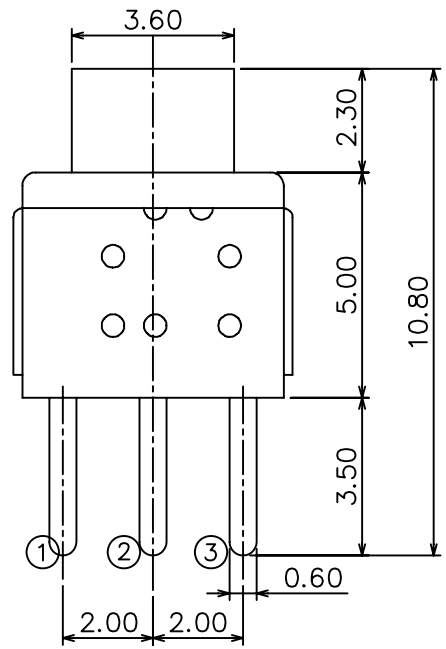
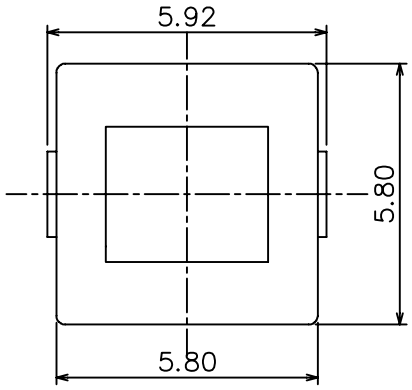
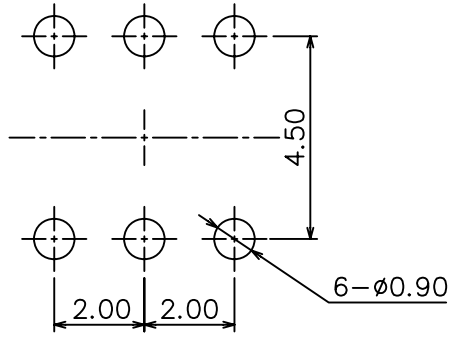
RoHS
Compatible

△				
△				
△				
△				
ZONE	REV	DESCRIPTION	DATE	APPD.

Circuit Diagram



P.C.B Mounting pattern Dimension



Specifications

- Rating : DC 30V, 0.1A
- Circuit : 2C-2P
- Operating mode : self-lock
non-lock
- Contact resistance : 30mΩ Max.
- Insulation resistance : 100MΩ Min.
- Stroke : full 1.9mm
lock 1.0mm
- Operating force : self-lock 150±80gf
non-lock 250±80gf

達立科技股份有限公司
Dawning Precision Co., Ltd.
TEL: 886-2-82271388 FAX: 886-2-82272198

DESIGN	Will	SCALE		
DRAWING	Will	UNIT	mm	
CHECK	Will	SIZE	A4: 210*297	
APPROVAL	Eric	VERSION	01	

TOLERANCE UNLESS OTHERWISE STATED(mm)	PART NAME	PUSH SWITCH
less than 10 — ±0.2	PART NO	PS-D16F SERIES
10~30 — ±0.3	DRAWING NO	
30~100 — ±0.5	DATE	2009/11/10
ANGIE — ±2°		