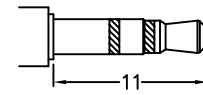
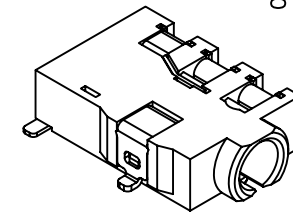
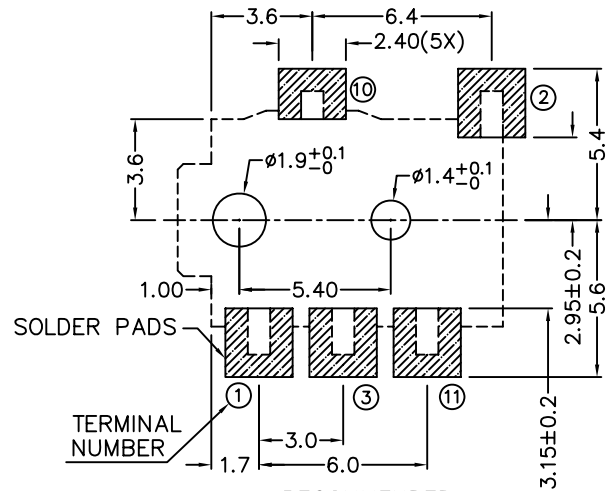
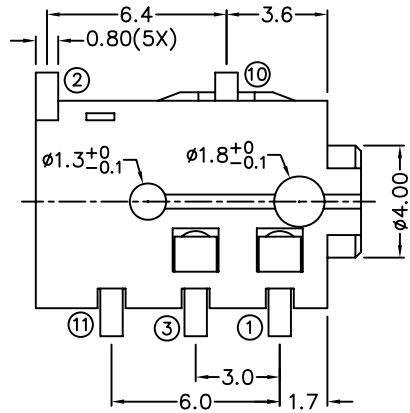
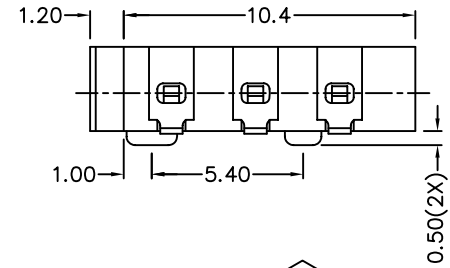
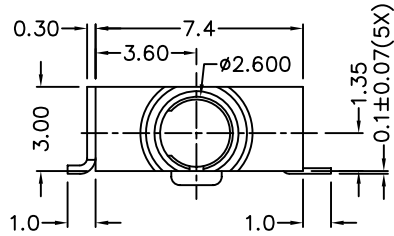
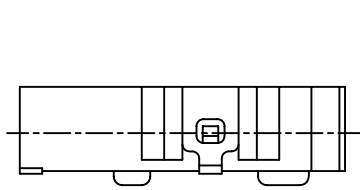


**RoHS**  
**Compatible**

△				
△				
△				
△				
ZONE	REV	DESCRIPTION	DATE	APPD.



2.5 MATE PLUG

RECOMMENDED  
SOLDER PAD LAYOUT

MODEL NO.	PJ-2665	PJ-2664A	PJ-2663	PJ-2663A
SCHMATIC				

- \* MATERIAL
- TERMINAL 1 : COPPER ALLOY
  - TERMINAL 2 : COPPER ALLOY
  - TERMINAL 3 : COPPER ALLOY
  - TERMINAL 10 : BRASS
  - TERMINAL 11 : COPPER ALLOY
  - HOUSING : PA6T

**達立科技股份有限公司**  
**Dawning Precision Co., Ltd.**  
TEL: 886-2-82271388 FAX: 886-2-82272198

DESIGN	Will	SCALE		
DRAWING	Will	UNIT	mm	
CHECK	Will	SIZE	A4: 210*297	
APPROVAL	Eric	VERSION	01	

TOLERANCE UNLESS OTHERWISE STATED(mm)	PART NAME	PHONE JACK
less than 10 — ±0.2	PART NO	PJ-266 SERIES
10~30 — ±0.3	DRAWING NO	
30~100 — ±0.5	DATE	2009/07/23
ANGIE — ±2°		