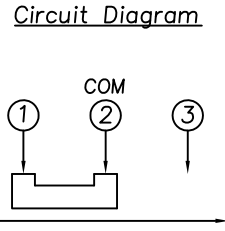
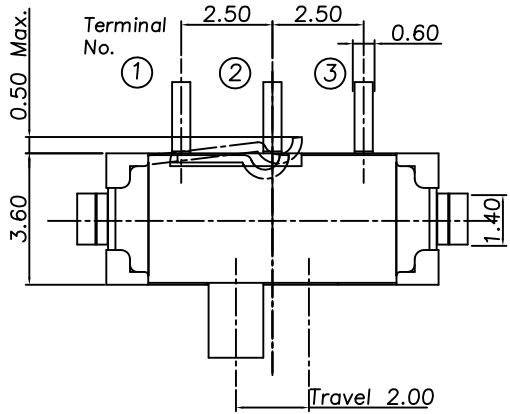


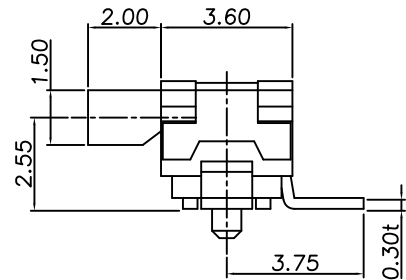
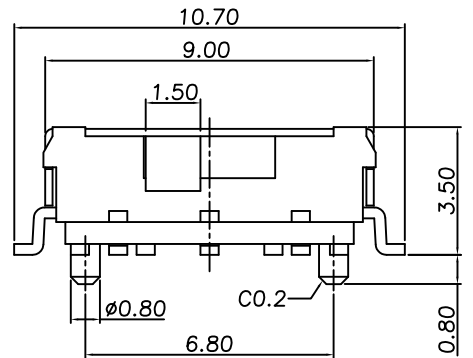
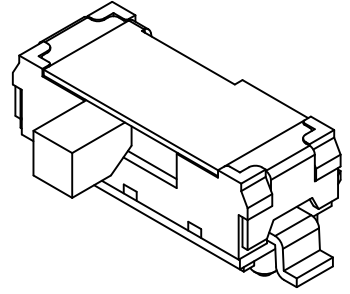
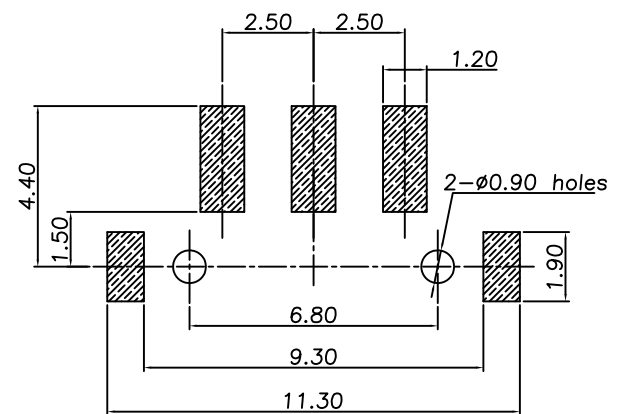
RoHS
Compatible

發行
2013.01.03
達立

△				
△				
△				
△				
ZONE	REV	DESCRIPTION	DATE	APPD.



P.C.B Mounting pattern Dimension



Specifications

1. Rating : DC 6V, 0.3A Max.
2. Contact resistance : 70mΩ Max.
3. Timing : non-shorting
4. Travel : 2.0±0.1mm
5. Operating force : 175±75gf
6. Operating life : 10,000 cycles Min.

5	Contact Plate	Phosphor Bronze	1	DPC-007-06	Ag Clad
4	Terminal	Brass	1	DPC-007-05	Brass, Ni 0.2um Min. , Ag 0.5um Min.
3	Cover	Stainless Steel	1	DPC-007-03	Natural
2	Stem	PA6T	1	DPC-007-02	UL94 V-0. Black.
1	Case	LCP(DuPont-6130L)	1	DPC-007-01	UL94 V-0. Black.
NO	Part No.	Material	Q'ty	Drawing No.	Finishing

達立科技股份有限公司
Dawning Precision Co., Ltd.
TEL: 886-2-82271388 FAX: 886-2-82272198

DESIGN	Steven	SCALE	
DRAWING	Steven	UNIT	mm
CHECK	Will	SIZE	A4: 210*297
APPROVAL	Eric	VERSION	01

TOLERANCE UNLESS OTHERWISE STATED(mm)
less than 10 — ±0.2
10~30 — ±0.3
30~100 — ±0.5
ANGIE — ±2°

PART NAME	SLIDE SWITCH
PART NO	SSS15T1-EG-175-T10
DRAWING NO	
DATE	2013/01/03