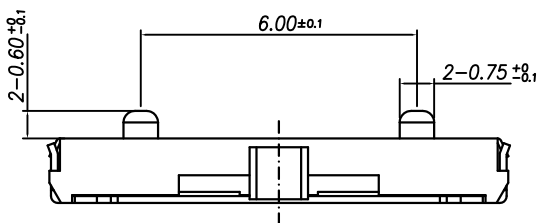


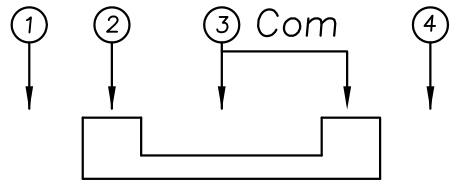
| | | | | |
|------|-----|-------------|------|-------|
| △ | | | | |
| △ | | | | |
| △ | | | | |
| △ | | | | |
| ZONE | REV | DESCRIPTION | DATE | APPD. |

發行
2013.06.10
達立

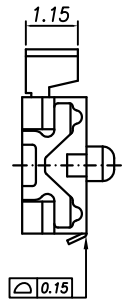
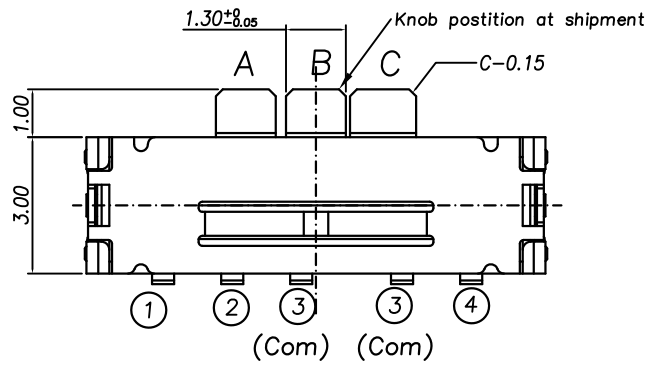
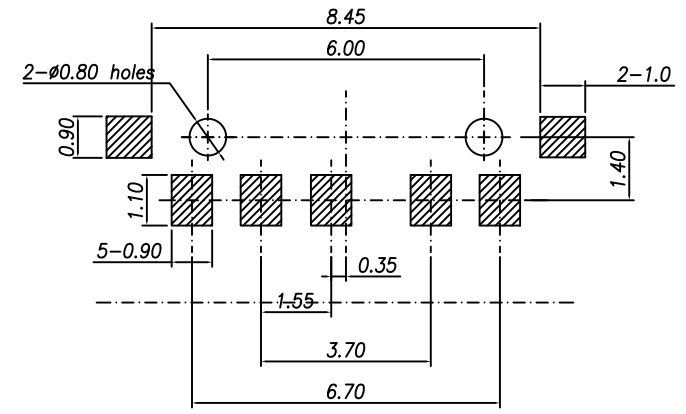
RoHS
Compatible



Circuit Diagram
1-pole, 3-positions

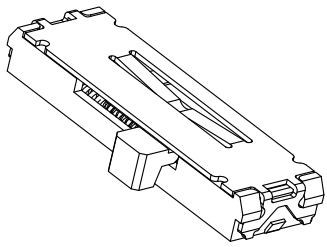
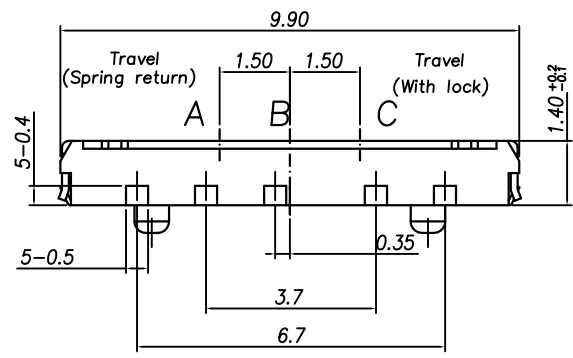


P.C.B Mounting
pattern Dimension



Specifications

1. Rating : DC 15V 0.3A.
2. Circuit : 1C-3P.
3. Travel : 1.50 mm.
4. Contact resistance : 1Ω (Max.) or less.
5. Self return & with click : 150±100gf.
6. Operating life : 5,000 cycles Min.



| | | | | |
|----|-----------|-----------------|------|-----------|
| 6 | Spring | Stainless Steel | 1 | — |
| 5 | Contact | Phosper Bronze | 1 | Ag Plated |
| 4 | Stem | PA46 | 1 | Black |
| 3 | Cover | Stainless Steel | 1 | Ag Plated |
| 2 | Terminal | Brass | 5 | Ag Plated |
| 1 | Case | LCP | 1 | Black |
| NO | Part Name | Material | Q'ty | Finishing |

達立科技股份有限公司
Dawning Precision Co., Ltd.
TEL: 886-2-82271388 FAX: 886-2-82272198

| | | | | |
|----------|-------|---------|-------------|--|
| DESIGN | Frank | SCALE | | |
| DRAWING | Frank | UNIT | mm | |
| CHECK | Frank | SIZE | A4: 210*297 | |
| APPROVAL | Eric | VERSION | 01 | |

| | | |
|---------------------------------------|------------|--------------|
| TOLERANCE UNLESS OTHERWISE STATED(mm) | PART NAME | SLIDE SWITCH |
| less than 10 — ±0.2 | PART NO | SS-1301A |
| 10~30 — ±0.3 | DRAWING NO | |
| 30~100 — ±0.5 | DATE | 2013/06/10 |
| ANGIE — ±2° | | |