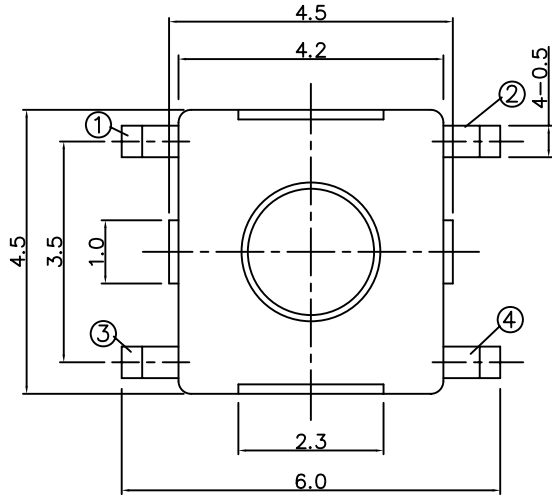
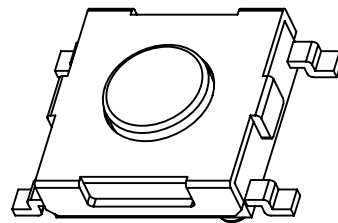
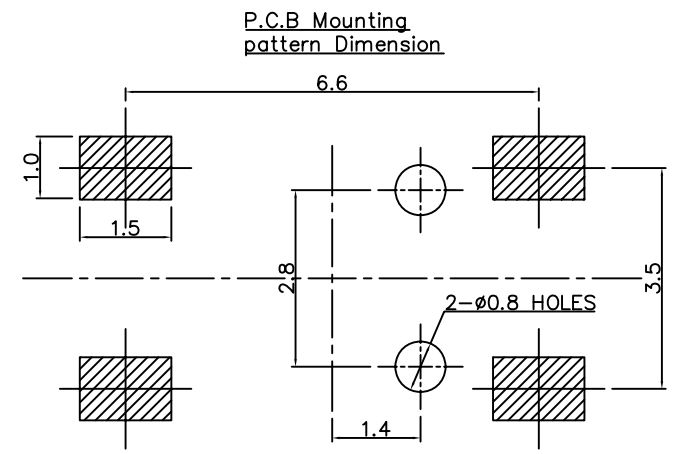
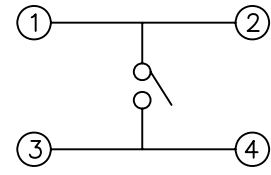


**RoHS**  
**Compatible**

▲				
▲				
▲				
▲				
ZONE	REV	DESCRIPTION	DATE	APPD.



Circuit diagram

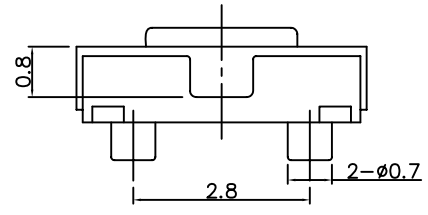
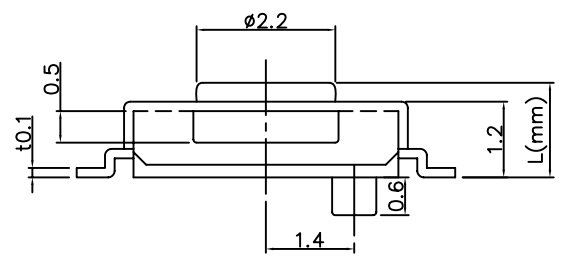


KNOB(L)

Model No	L(mm)
TS-A27E	1.5
TS-A27EA	4.3

Specification

- Rating : DC 12V, 50mA Max.
- Circuit : 1C-1P
- Contact resistance : 100mΩ Max.
- Travel : 0.2±0.1mm
- 



Model No	Operating Force	Life Cycles
TS-A27E-2	180±50gf	100,000 Cycles
TS-A27E-3	250±50gf	100,000 Cycles

**達立科技股份有限公司**  
**Dawning Precision Co., Ltd.**  
TEL: 886-2-82271388 FAX: 886-2-82272198

DESIGN	Will	SCALE		
DRAWING	Will	UNIT	mm	
CHECK	Will	SIZE	A4: 210*297	
APPROVAL	Eric	VERSION	01	

TOLERANCE UNLESS OTHERWISE STATED(mm)	PART NAME	TACT SWITCH
less than 10 — ±0.2	PART NO	TS-A27E SERIES
10~30 — ±0.3	DRAWING NO	
30~100 — ±0.5	DATE	2010/03/18
ANGIE — ±2°		