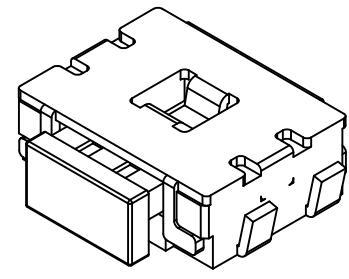
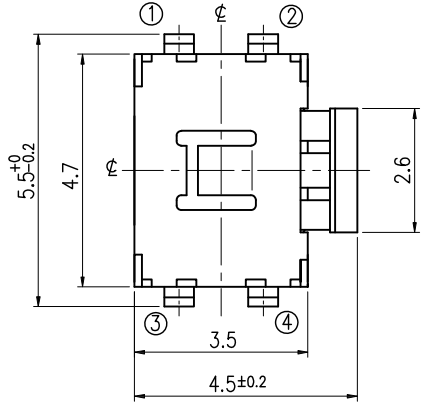


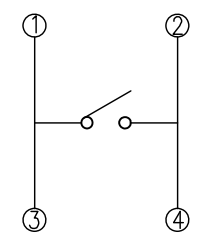
▲				
▲				
▲				
▲				
ZONE	REV	DESCRIPTION	DATE	APPD.

發行
2014.03.21
達立

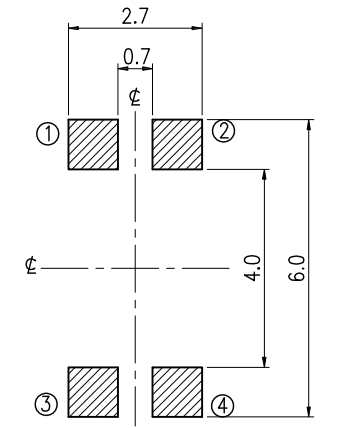
RoHS
Compatible



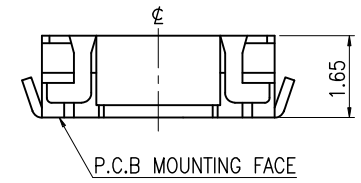
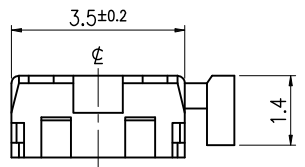
CIRCUIT DIAGRAM



P.C.B MOUNTING PATTERN DIMENSION



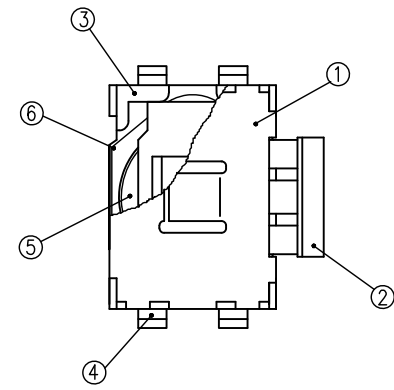
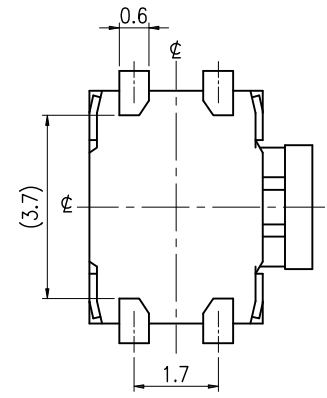
HATCHED AREA SHOWS SOLDERING LAND



SPECIFICATIONS

- Rating : 50mA, DC12V.
- Contact resistance: 100mΩ Max.
- Insulation resistance : 100MΩ Min.
- Withstand voltage : 1 minute at AC250V.

5.	Model	Operating Force	Travel	Life Cycles
	TS-A14NU-2-S016	160±50gf	0.25±0.1mm	200,000 cycles



6	Tape	Polyamide	1	—
5	Contact	Stainless steel plate	1	Ag Plated
4	Terminal	Copper alloy	4	Ag Plated
3	Frame	Polyamide resin	1	White
2	Stem	Polyamide resin	1	White
1	Cover	Stainless steel plate	1	
NO	Part Name	Material	Q'ty	Finishing

達立科技股份有限公司
Dawning Precision Co., Ltd.
TEL: 886-2-82271388 FAX: 886-2-82272198

DESIGN	Frank	SCALE		
DRAWING	Frank	UNIT	mm	
CHECK	Frank	SIZE	A4: 210*297	
APPROVAL	Eric	VERSION	01	

TOLERANCE UNLESS OTHERWISE STATED(mm)	PART NAME	TACT SWITCH
less than 10 — ±0.2	PART NO	TS-A14NU-2-S016
10~30 — ±0.3	DRAWING NO	
30~100 — ±0.5	DATE	2014/03/21
ANGIE — ±2'		