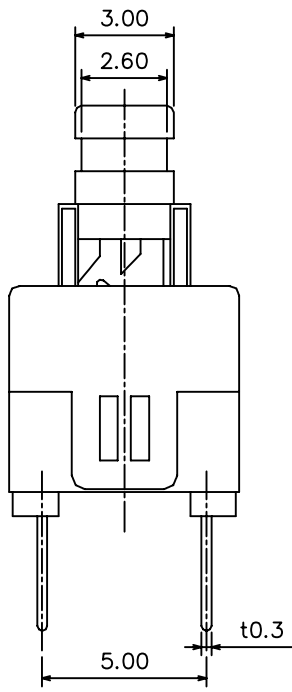
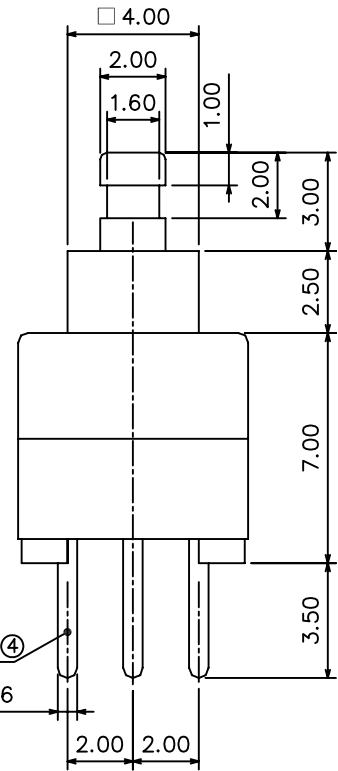
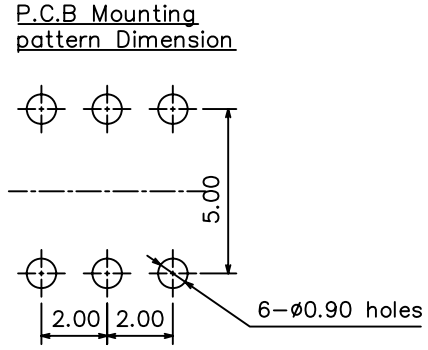
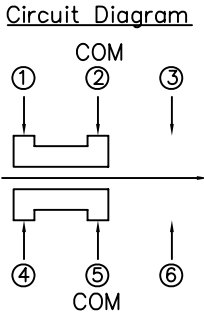
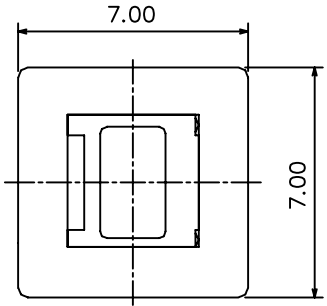
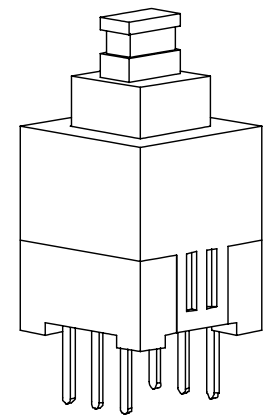


RoHS
Compatible

△				
△				
△				
△				
ZONE	REV	DESCRIPTION	DATE	APPD.



- Specifications
1. Rating : DC 30V, 0.1A
 2. Circuit : 2C-2P
 3. Contact resistance : 100mΩ Max.
 4. Timing : shorting or non-shorting
 5. Operating mode : self-lock
non-lock
 6. Stroke : full-1.8mm
lock-1.0mm
 7. Operating force : 200±50gf
 8. Life : 10,000 cycles



達立科技股份有限公司
Dawning Precision Co., Ltd.
TEL: 886-2-82271388 FAX: 886-2-82272198

DESIGN	Will	SCALE		
DRAWING	Will	UNIT	mm	
CHECK	Will	SIZE	A4: 210*297	
APPROVAL	Eric	VERSION	01	

TOLERANCE UNLESS OTHERWISE STATED(mm)	PART NAME	PUSH SWITCH
less than 10 — ±0.2	PART NO	PS-D12 SERIES
10~30 — ±0.3	DRAWING NO	
30~100 — ±0.5	DATE	2009/06/11
ANGIE — ±2°		

www.dawning2.com.tw