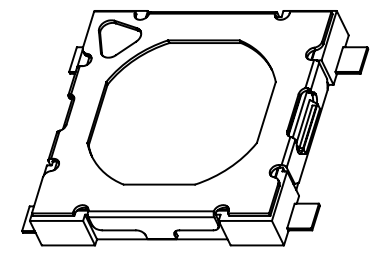
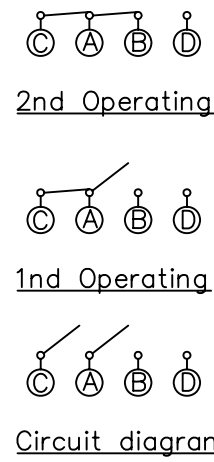
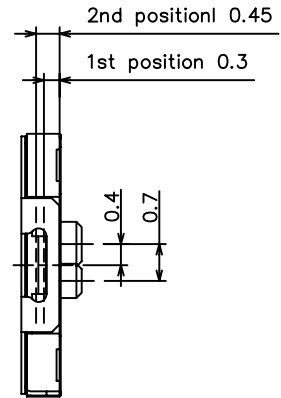
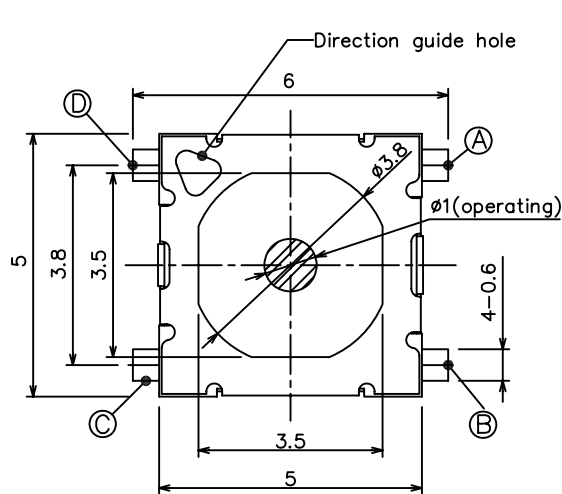


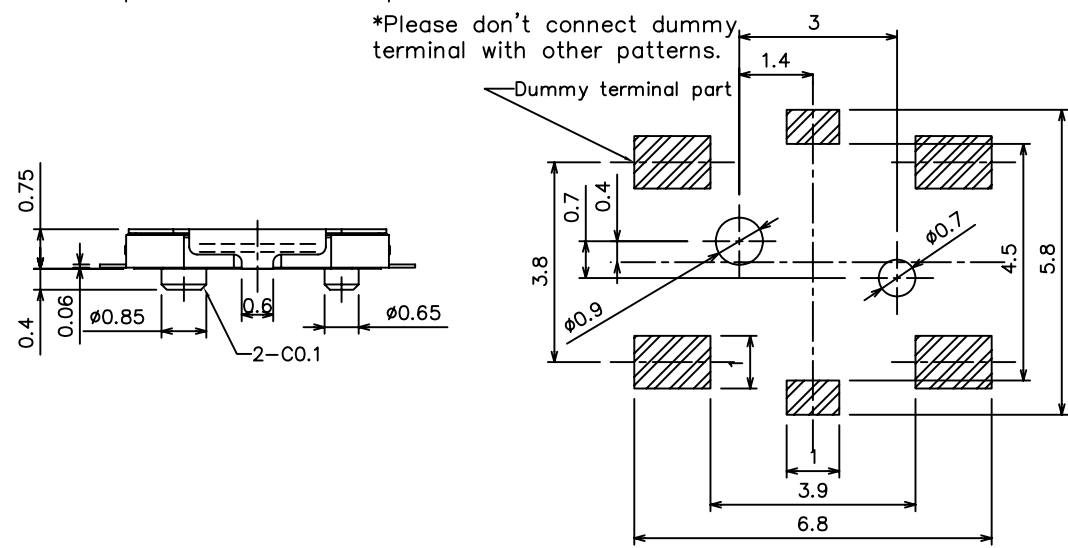
RoHS
Compatible

△				
△				
△				
△				
ZONE	REV	DESCRIPTION	DATE	APPD.



P.C.B Mounting pattern Dimension

*Please don't connect dummy terminal with other patterns.



Specifications

1. Rating : 50mA 12V DC
2. Contact resistance : 100mΩ Max.
3. Insulation resistance : 100MΩ Min, 500V DC
4. Withstanding voltage : 250V AC for 1min
5. Operating force : 1st 1.0±0.4N
2nd 2.4±0.7N
6. Operating life : 30,000 cycles
7. Operating temperature range : -20 to 70°
8. Storage temperature range : -30 to 80°

6	Cover	Stainless	1	
5	Dust Cover	PI Film	1	
4	Click Plate	Stainless	1	Ag Plate
3	Contact	Stainless	1	Ag Plate
2	Terminal	Brass	1	Ag Plate
1	Base Mold	LCP	1	BLACK
NO	Part Name	Material	Q'ty	Finishing

達立科技股份有限公司
Dawning Precision Co., Ltd.
TEL: 886-2-82271388 FAX: 886-2-82272198

DESIGN	Will	SCALE		
DRAWING	Will	UNIT	mm	
CHECK	Will	SIZE	A4: 210*297	
APPROVAL	Eric	VERSION	01	

TOLERANCE UNLESS OTHERWISE STATED(mm)	PART NAME	TACT SWITCH
less than 10 — ±0.2	PART NO	TSW-15-21B-T50
10~30 — ±0.3	DRAWING NO	
30~100 — ±0.5	DATE	2009/03/19
ANGIE — ±2°		