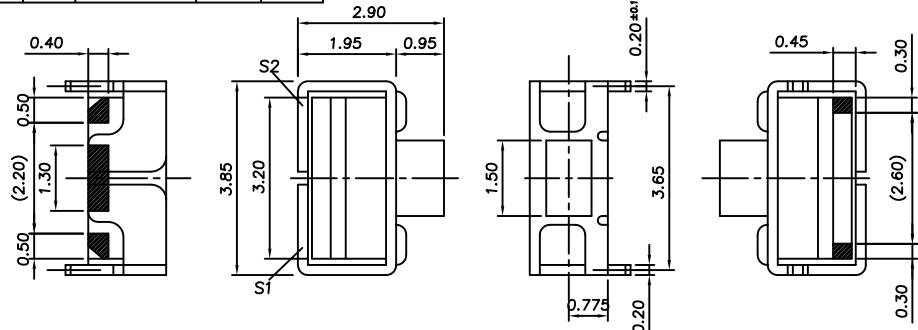
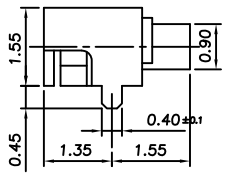
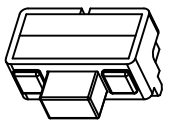


**RoHS**  
Compatible

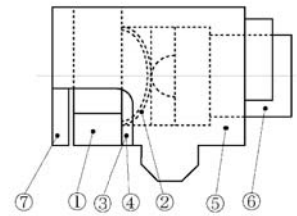
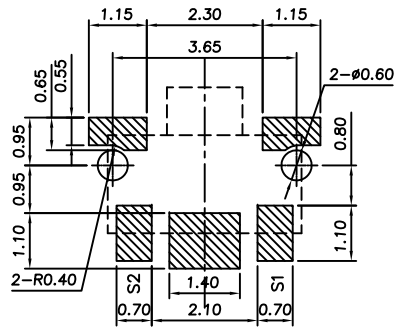
△					
△					
△					
ZONE	REV	DESCRIPTION	DATE	APPD.	



Circuit Diagram



P.C.B Mounting pattern Dimension



**Specifications**

1. Rating : 20mA,DC12V Max.
2. Circuit : 1C-1P
3. Travel : 0.2±0.1mm
4. Contact resistance : 100mΩ Max.
5. Operating force : 160±50gf
6. Operating life : 100,000 cycles Min.

No.	Parts	Material/Specification	UL grade
1	Circuit board	FR-4,PCB	94V-0
2	Tactile spring	Stainless steel atrip	—
3	Adhesive sheet	Anti-heat polyimide sheet	94V-0
4	Waterproof sheet	Anti-heat polyimide sheet	94V-0
5	case	Polyphthalamide resin, White PART	94HB equivalent
6	Plunger	Polyphthalamide resin, White PART	94HB equivalent
7	Metal cover	—	—

**達立科技股份有限公司**  
Dawning Precision Co., Ltd.  
TEL: 886-2-82271388 FAX: 886-2-82272198

DESIGN	Will	SCALE	
DRAWING	Will	UNIT	mm
CHECK	Will	SIZE	A4: 210*297
APPROVAL	Eric	VERSION	01

TOLERANCE UNLESS OTHERWISE STATED(mm)  
less than 10 — ±0.3  
10~30 — ±0.2  
30~100 — ±0.5  
ANGLE — ±2°

PART NAME	TACT SWITCH
PART NO	TSS12-KT2-160-T30
DRAWING NO	
DATE	2009/12/15