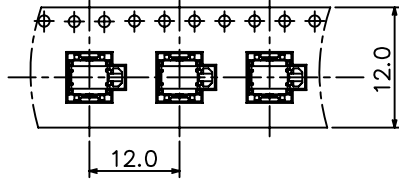


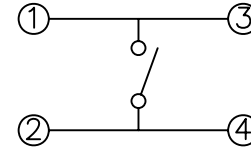
**RoHS**  
**Compatible**

△				
△				
△				
△				
ZONE	REV	DESCRIPTION	DATE	APPD.

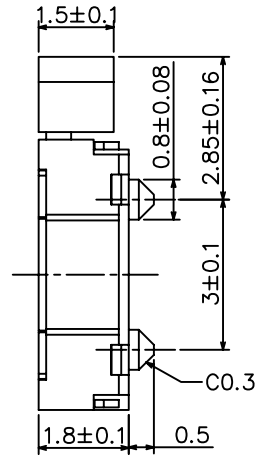
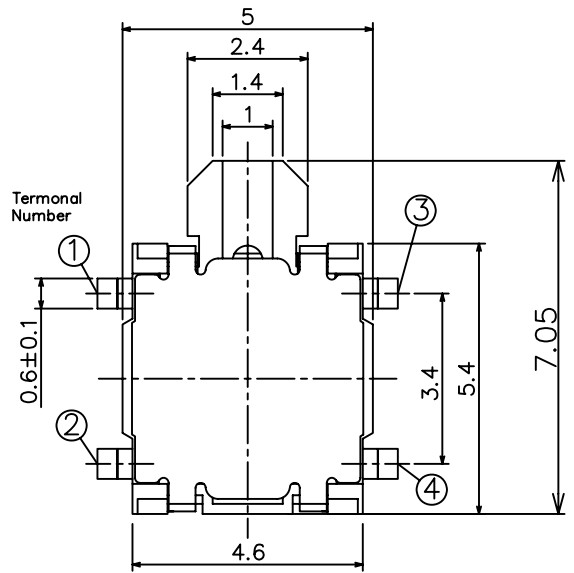
Tape & Reel Specifications  
Component Orientation



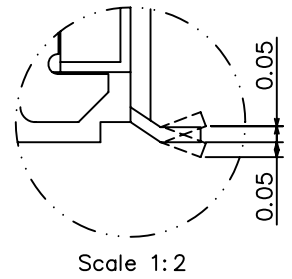
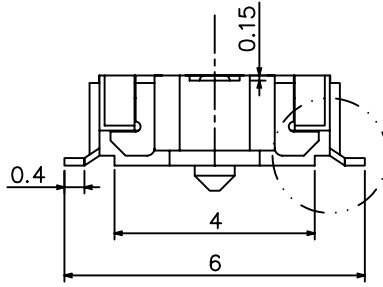
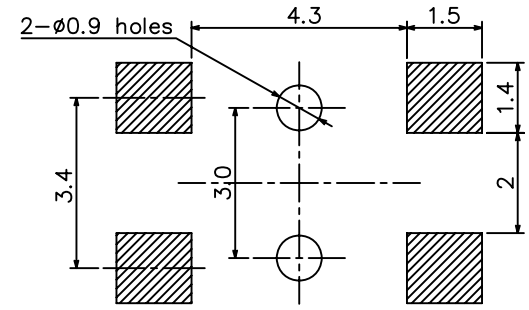
Circuit diagram



Direction of feed →



P.C.B Mounting pattern Dimension



**SPECIFICATIONS**

1. Rating : 50mA 12V DC
2. Contact resistance : 500mΩ Max.
3. Insulation resistance : 100MΩ Min, 100V DC
4. Withstanding voltage : 250V AC for 1min
5. Operating force : 180±40 gf
6. Travel : 0.3±0.15mm
7. Release force : 20gf
8. Operating life : 50,000 cycles
9. Operating temperature range -20 to 70°

**達立科技股份有限公司**  
**Dawning Precision Co., Ltd.**  
TEL: 886-2-82271388 FAX: 886-2-82272198

DESIGN	Will	SCALE		
DRAWING	Will	UNIT	mm	
CHECK	Will	SIZE	A4: 210*297	
APPROVAL	Eric	VERSION	01	

TOLERANCE UNLESS OTHERWISE STATED(mm)	PART NAME	TACT SWITCH
less than 10 — ±0.2	PART NO	TSS11-EF-180-T20
10~30 — ±0.3	DRAWING NO	
30~100 — ±0.5	DATE	2009/08/20
ANGIE — ±2°		