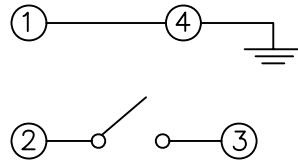


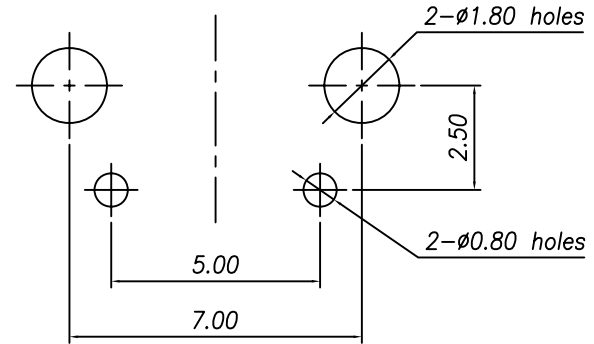
RoHS
Compatible

| | | | | |
|------|-----|-------------|------|-------|
| △ | | | | |
| △ | | | | |
| △ | | | | |
| △ | | | | |
| ZONE | REV | DESCRIPTION | DATE | APPD. |

Circuit diagram



P.C.B Mounting pattern Dimension

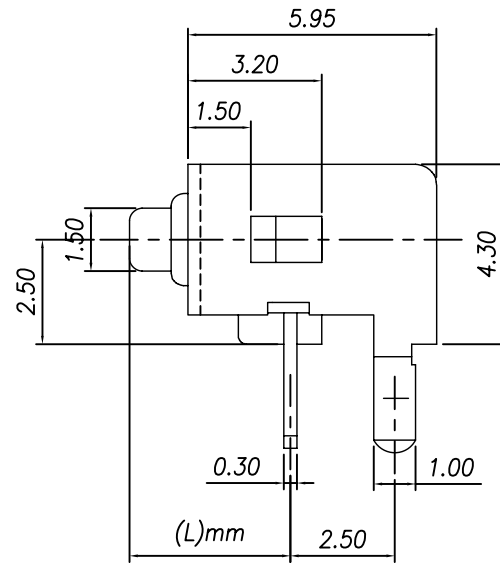
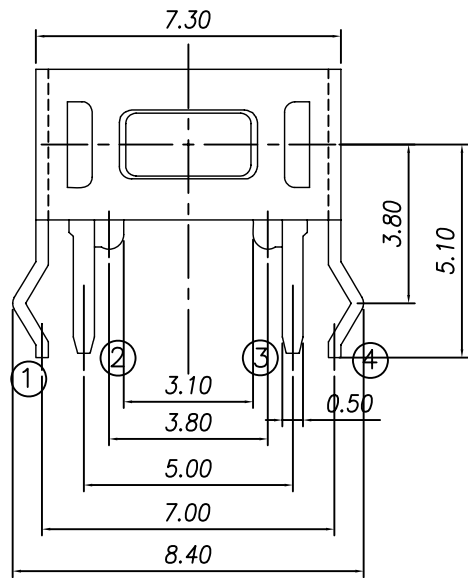
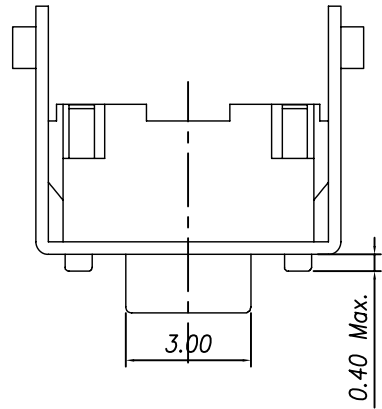


Order Information:
TS-A01V- - -S017
Force
Height

Specifications

1. Rating : 50mA 12V DC
2. Contact resistance : 100mΩ Max.
3. Insulation resistance : 100MΩ min, 100V DC
4. Withstanding voltage : 250V AC - 1minute
5. Travel : 0.25^{+0.2}_{-0.1} mm
- 6.

| Model | L | Stem Color | Case Color | O/Force |
|------------|------|------------|------------|----------|
| TS-A01V-2 | 3.15 | Black | Black | 180±50gf |
| TS-A01VA-2 | 3.85 | Black | Black | 180±50gf |
| TS-A01V-3 | 3.15 | Violet | Gray | 260±50gf |
| TS-A01VA-3 | 3.85 | Violet | Gray | 260±50gf |



達立科技股份有限公司

Dawning Precision Co., Ltd.
TEL: 886-2-82271388 FAX: 886-2-82272198

| | | | | |
|----------|------|---------|-------------|--|
| DESIGN | Will | SCALE | | |
| DRAWING | Will | UNIT | mm | |
| CHECK | Will | SIZE | A4: 210*297 | |
| APPROVAL | Eric | VERSION | 01 | |

| |
|---------------------------------------|
| TOLERANCE UNLESS OTHERWISE STATED(mm) |
| less than 10 — ±0.3 |
| 10~30 — ±0.4 |
| 30~100 — ±0.5 |
| ANGLE — ±2° |

| | |
|------------|----------------|
| PART NAME | TACT SWITCH |
| PART NO | TS-A01V SERIES |
| DRAWING NO | |
| DATE | 2010/10/20 |

www.dawning2.com.tw