

△				
△				
△				
△				
ZONE	REV	DESCRIPTION	DATE	APPD.

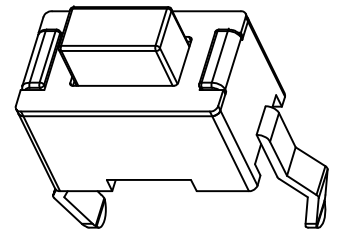
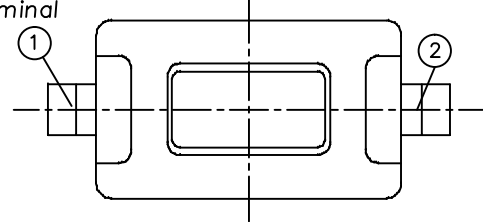
Order Information:
TS-A01-__-S017

Operating Force

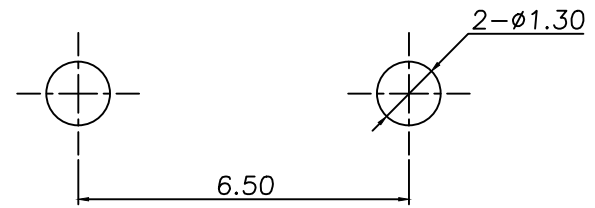


RoHS
Compatible

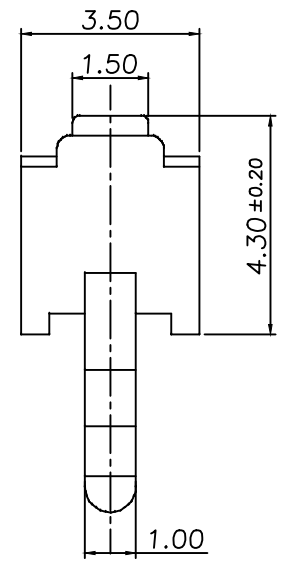
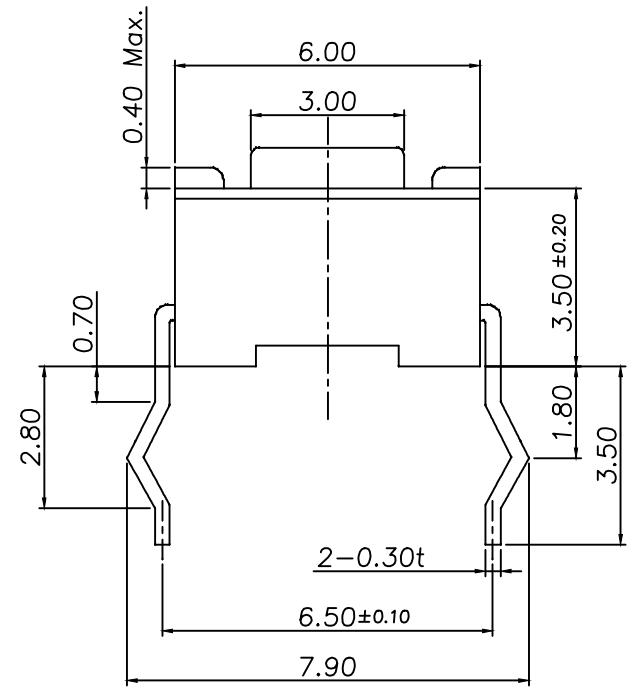
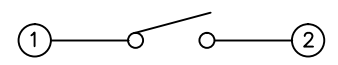
Terminal No.



P.C.B Mounting
pattern Dimension



Circuit diagram



Specifications

1. Rating : 50mA 12V DC
2. Contact resistance : 100mΩ max.
3. Insulation resistance : 100MΩ min, 100V DC
4. Withstanding voltage : 250V AC- 1minute
5. Travel : 0.25 \pm 0.2 $\substack{-0.1}$ mm
- 6.

Model	Stem Color	Case Color	Operating Force	Life Cycles
TS-A01-1	Black	Natural	130±50gf	50,000 cycle
TS-A01-2	Black	Black	180±50gf	40,000 cycle
TS-A01-3	Natural	Natural	260±50gf	30,000 cycle

5	Cover	Stainless	1	—————
4	Contact	Stainless	1	Ag Clad
3	Stem	PBT	1	See Order Information
2	Terminal	Brass	2	Ag Plated
1	Case	PA66	1	See Order Information
NO	Part Name	Material	Q'ty	Finishing

達立科技股份有限公司
Dawning Precision Co., Ltd.
TEL: 886-2-82271388 FAX: 886-2-82272198

DESIGN	Will	SCALE		
DRAWING	Ross	UNIT	mm	
CHECK	Elsa	SIZE	A4: 210*297	
APPROVAL	Eric	VERSION	01	

TOLERANCE UNLESS OTHERWISE STATED(mm)	PART NAME	TACT SWITCH
less than 10 — ±0.3	PART NO	TS-A01 SERIES
10~30 — ±0.4	DRAWING NO	
30~100 — ±0.5	DATE	2015/04/09
ANGIE — ±2°		

www.dawning2.com.tw