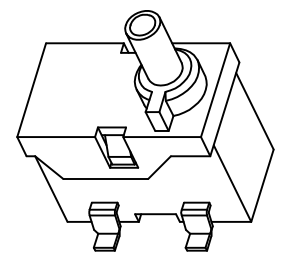
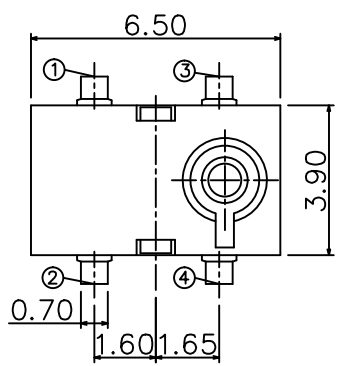


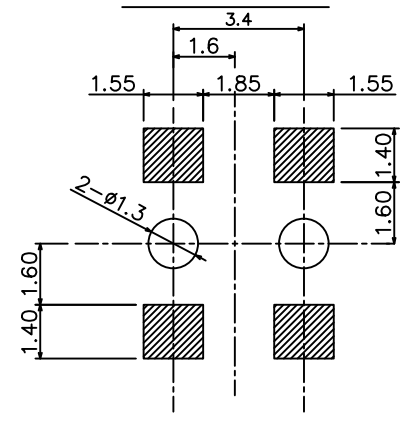
▲				
▲				
▲				
▲				
ZONE	REV	DESCRIPTION	DATE	APPD.

**RoHS**  
**Compatible**

發行  
2014.09.09  
達立

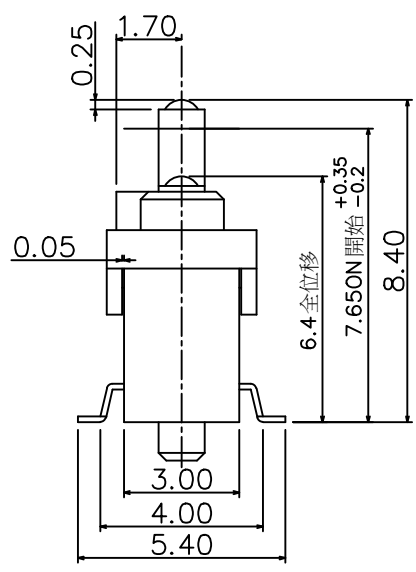
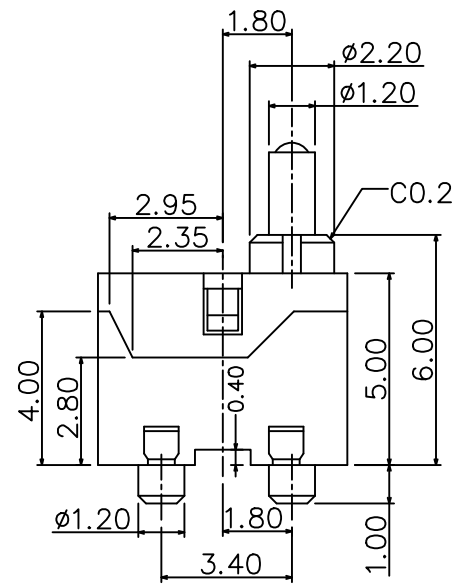


**P.C.B LAYOUT**

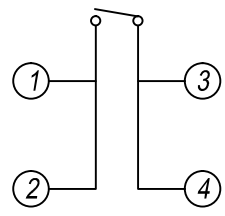


Order Information:

DS-A30-S142  
Model Type  
Model name



**Circuit diagram**



**Specification**

1. Rating : 5mA, DC 5V Max.
2. Contact resistance : 500mΩ Max.
3. Travel : 2.00 mm
4. Insulation resistance : 100MΩ min.
5. Withstand voltage : DC 250V.
6. Operating force : 35 gf MAX
7. Operating life : 50,000 cycles Min.

4	TERMINAL	COPPER ALLOY	1	Ag Plated
4	CONTACT	SUS	1	Ag Plated
3	STEM	LCP	1	BLACK
2	COVER	PA9T	1	BLACK
1	BASE	LCP	1	BLACK
No.	Part Name	Material	Q"ty	Finishing

**達立科技股份有限公司**  
**Dawning Precision Co.,Ltd.**  
TEL: 886-2-82271388 FAX: 886-2-82272198

DESIGN	Ross	SCALE	
DRAWING	Ross	UNIT	mm
CHECK	Elsa	SIZE	A4: 210*297
APPROVAL	Eric	VERSION	01

TOLERANCE UNLESS OTHERWISE STATED(mm)	PART NAME	DETECTOR SWITCH
less than 10 — ±0.2	PART NO	DS-A30-S142
10~30 — ±0.3	DRAWING NO	
30~100 — ±0.5	DATE	2014/09/03
ANGLE — ±2'		

www.dawning2.com.tw