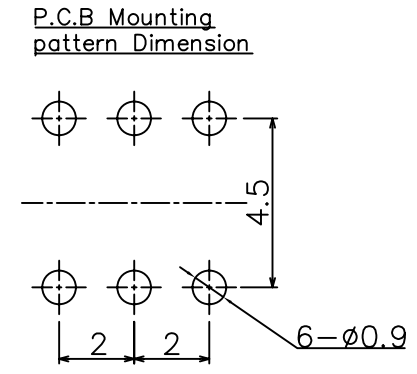
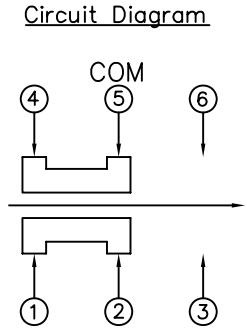
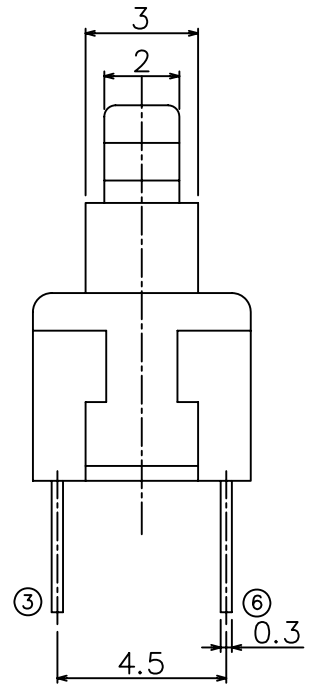
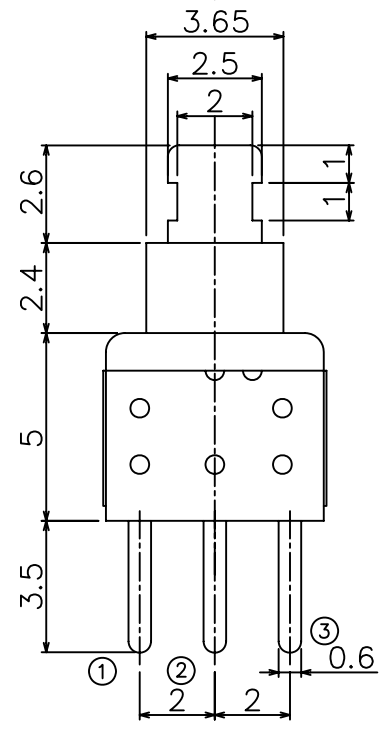
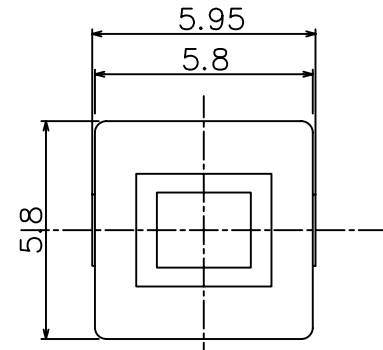


RoHS
Compatible

▲				
▲				
▲				
▲				
ZONE	REV	DESCRIPTION	DATE	APPD.



- Specifications**
1. Rating : DC 30V, 0.1A
 2. Circuit : 2C-2P
 3. Timing : non-shorting
 4. Operating mode : self-lock 150±80gf
non-lock 250±80gf
 5. Stroke : full 1.9mm
lock 1.0mm
 6. Operating life : 10,000 cycles

達立科技股份有限公司
Dawning Precision Co., Ltd.
TEL: 886-2-82271388 FAX: 886-2-82272198

DESIGN	Will	SCALE		
DRAWING	Will	UNIT	mm	
CHECK	Will	SIZE	A4: 210*297	
APPROVAL	Eric	VERSION	01	

TOLERANCE UNLESS OTHERWISE STATED(mm)	PART NAME	PUSH SWITCH
less than 10 — ±0.2	PART NO	PS-D16 SERIES
10~30 — ±0.3	DRAWING NO	
30~100 — ±0.5	DATE	2009/12/24
ANGIE — ±2°		