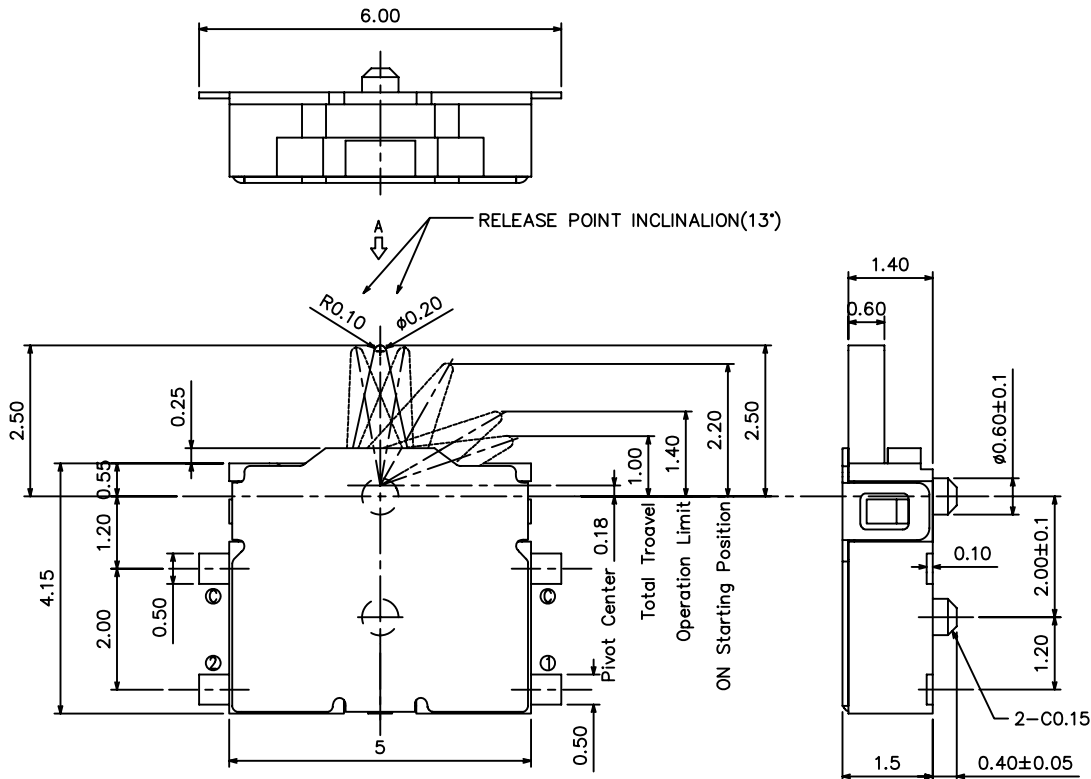
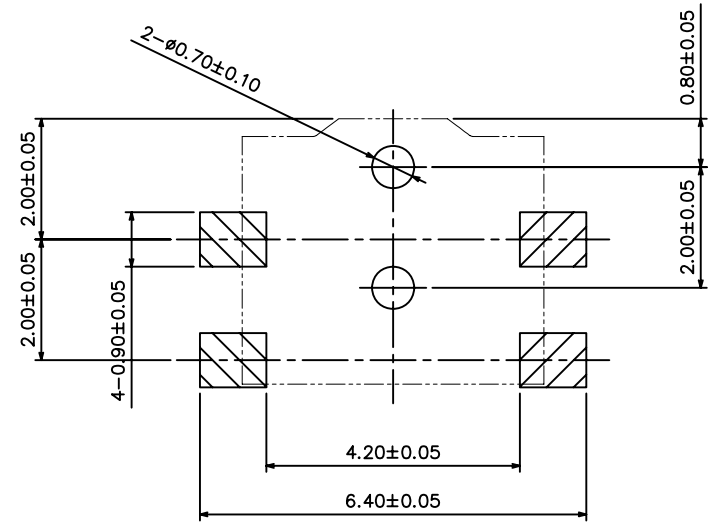


RoHS
Compatible

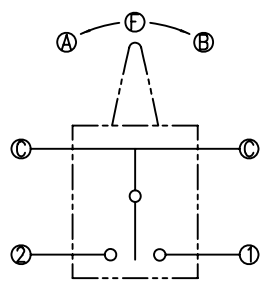
▲				
▲				
▲				
▲				
ZONE	REV	DESCRIPTION	DATE	APPD.



P.C.B Mounting
pattern Dimension



- Specifications:
1. Rating : 10mA,DC 5V.
 2. Contact Resistance : 500mΩ Max.
 3. Insulation Resistance : DC 100V 1M±5s 100MΩ.
 4. Dielectric Strength : AC 100V 1M±5s.
 5. Operating Force : 30gf Max.
 6. Life : 100,000 Cycles.
 7. Operating Temperature Range : -10° ~ 60°C.
 8. Storage Temperature Range : -20° ~ 70°C.



Circuit diagram

TERMINAL LEVER POSITION	②	Ⓒ	①
Ⓕ		■	
Ⓖ		■	■
Ⓑ	■	■	

7	SPRING	1	STAINLESS STEEL	-
6	SLIDE	1	HIGH-TEMP THERMOPLASTIC	MOLDED BLACK
5	TERMINAL	1	PHOSPHOR BRONZE	WITH SILVER PLATING
4	BASE	1	HIGH-TEMP THERMOPLASTIC	MOLDED BLACK
3	CONTACT	1	PHOSPHOR BRONZE	WITH SILVER PLATING
2	COVER	1	STAINLESS STEEL	-
1	STEME	1	HIGH-TEMP THERMOPLASTIC	MOLDED BLACK
ITEM	PART NAME	Q'TY	MATERIALS	TREATMENT

達立科技股份有限公司
Dawning Precision Co.,Ltd.
TEL: 886-2-82271388 FAX: 886-2-82272198

DESIGN	Will	SCALE		
DRAWING	Will	UNIT	mm	
CHECK	Will	SIZE	A4: 210*297	
APPROVAL	Eric	VERSION	01	

TOLERANCE UNLESS OTHERWISE STATED(mm)	PART NAME	DETCTOR SWITCH
less than 10 — ±0.2	PART NO	DS-A90E
10~30 — ±0.3	DRAWING NO	
30~100 — ±0.5	DATE	2009/10/12
ANGIE — ±2°		