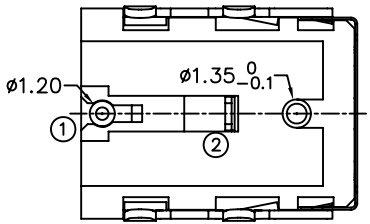
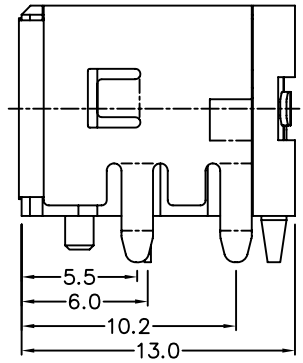
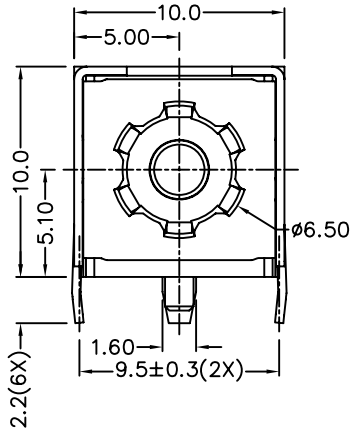
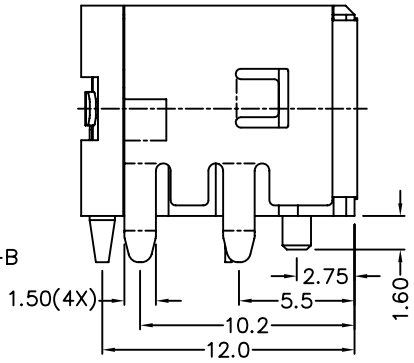
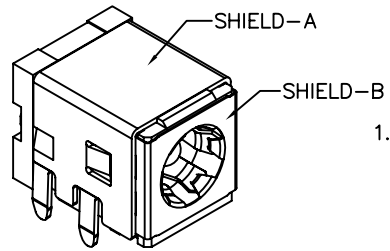


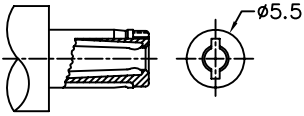
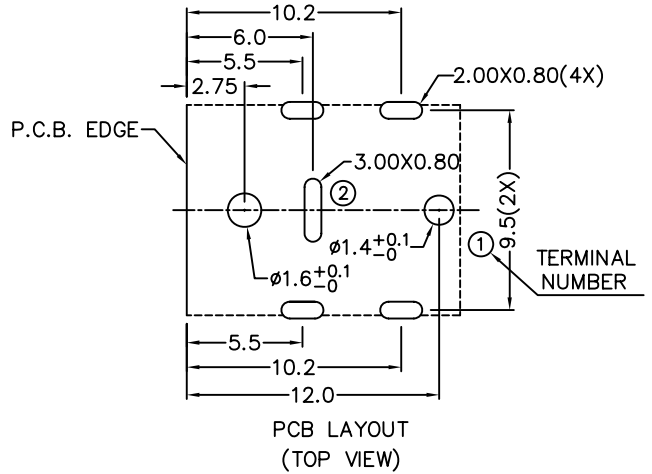
RoHS
Compatible

| | | | | |
|------|-----|-------------|------|-------|
| ▲ | | | | |
| ▲ | | | | |
| ▲ | | | | |
| ▲ | | | | |
| ZONE | REV | DESCRIPTION | DATE | APPD. |

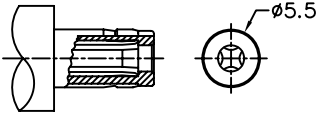


***MATERIAL**

- TERMINAL 1 : BRASS
- TERMINAL 2 : COPPER ALLOY
- STOPPER : C.R.STEEL
- SHIELD-A : C.R.STEEL
- SHIELD-B : STAINLESS STEEL
- HOUSING : PA6T
- COVER : PA6T



DC MATE PLUG
RATING: DC 20V 7A



DC MATE PLUG
RATING: DC 20V 10A

| | |
|------------|----------|
| MODEL NO. | DC-081HS |
| SCHEMATIC | 1 2 |
| CENTER PIN | φ2.5mm |

達立科技股份有限公司
Dawning Precision Co., Ltd.
TEL: 886-2-82271388 FAX: 886-2-82272198

| | | | | |
|----------|------|---------|-------------|--|
| DESIGN | Will | SCALE | | |
| DRAWING | Will | UNIT | mm | |
| CHECK | Will | SIZE | A4: 210*297 | |
| APPROVAL | Eric | VERSION | 01 | |

| | |
|---------------------------------------|------|
| TOLERANCE UNLESS OTHERWISE STATED(mm) | |
| less than 10 | ±0.2 |
| 10~30 | ±0.3 |
| 30~100 | ±0.5 |
| ANGIE | ±2° |

| | |
|------------|-----------------|
| PART NAME | DC POWER SOCKET |
| PART NO | DC-081HS |
| DRAWING NO | |
| DATE | 2009/07/28 |