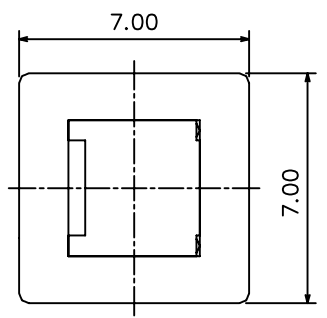
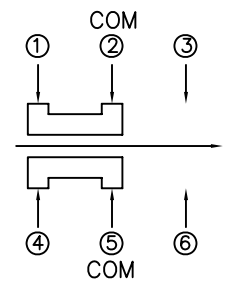


RoHS
Compatible

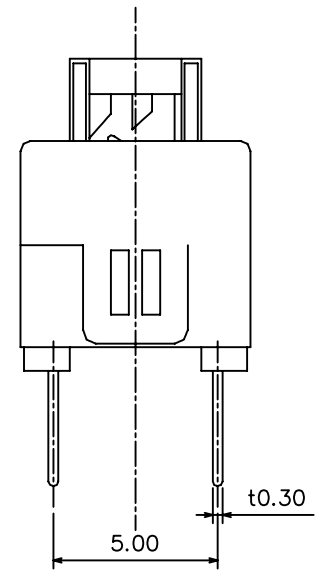
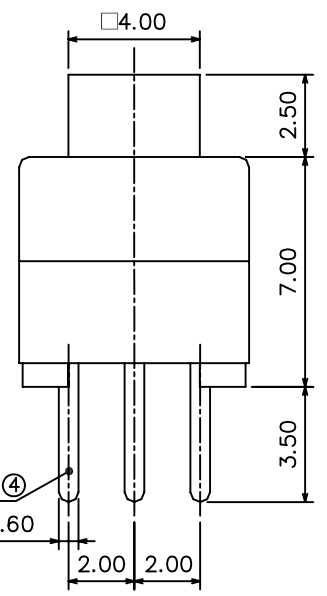
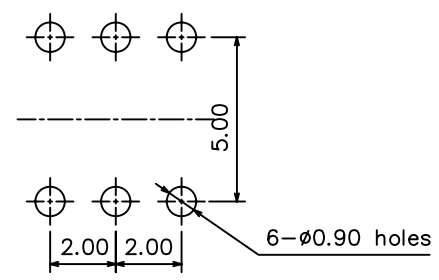
△				
△				
△				
△				
ZONE	REV	DESCRIPTION	DATE	APPD.



Circuit Diagram

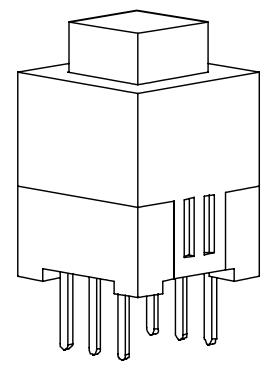


P.C.B Mounting pattern Dimension



Specifications

1. Rating : DC 30V, 0.1A
2. Circuit : 2C-2P
3. Contact resistance : 100mΩ Max.
4. Timing : shorting or non-shorting
5. Operating mode : self-lock
non-lock
6. Stroke : full-1.8mm
lock-1.0mm
7. Operating force : 200±50gf
8. Life : 10,000 cycles



達立科技股份有限公司
Dawning Precision Co., Ltd.
TEL: 886-2-82271388 FAX: 886-2-82272198

DESIGN	Will	SCALE			TOLERANCE UNLESS OTHERWISE STATED(mm)	PART NAME	PUSH SWITCH	
DRAWING	Will	UNIT	mm		less than 10	±0.2	PART NO	PS-D12F SERIES
CHECK	Will	SIZE	A4: 210*297		10~30	±0.3	DRAWING NO	
APPROVAL	Eric	VERSION	01		30~100	±0.5	DATE	2009/06/11
					ANGIE	±2'		